

Borden St between McKenzie Ave and Cedar Hill X Rd

November 24, 2020 To November 27, 2020



The data presented here is for information purposes only and should not be considered authoritative for construction, geotechnical, engineering, navigational, legal, or other site-specific uses. The information shared is owned by the Transportation Division of the Engineering Department at the District of Saanich. Accuracy is not guaranteed.

Start Date: 23-Nov-20
 Start Time: 0:03
 Station ID: C0006-02

Location 1: Borden St between McKenzie Ave and Cedar Hill X Rd

Note:

DATE:	November 23, 2020		November 24, 2020		November 25, 2020		November 26, 2020		November 27, 2020		WK AVG		WK AVG	HOURLY
	MON		TUE		WED		THURS		FRI		NB	SB	CH 1+2	%
Time:	NB	SB	NB	SB	NB	SB	NB	SB	NB	SB	NB	SB		
12-1 AM			5	9	3	2	9	8			6	6	12	0.2%
1-2 AM			0	1	1	2	5	3			2	2	4	0.1%
2-3 AM			2	2	4	2	5	4			4	3	6	0.1%
3-4 AM			3	4	2	3	2	4			2	4	6	0.1%
4-5 AM			3	7	4	10	7	9			5	9	13	0.2%
5-6 AM			18	10	17	8	23	12			19	10	29	0.5%
6-7 AM			85	69	81	71	84	67			83	69	152	2.4%
7-8 AM			183	193	199	191	188	194			190	193	383	6.1%
8-9 AM			204	305	239	362	261	378			235	348	583	9.3%
9-10 AM			213	230	172	193	197	215			194	213	407	6.5%
10-11 AM			245	247	180	189	208	221			211	219	430	6.8%
11-12 PM			281	270	255	230	243	242			260	247	507	8.0%
12-1 PM			296	274	220	201	228	237			248	237	485	7.7%
1-2 PM			270	248	214	224	241	248			242	240	482	7.6%
2-3 PM			275	293	293	276	259	277			276	282	558	8.8%
3-4 PM			355	278	378	304	366	308			366	297	663	10.5%
4-5 PM			263	325	241	305	255	295			253	308	561	8.9%
5-6 PM			204	153	181	157	193	173			193	161	354	5.6%
6-7 PM			115	124	125	88	130	112			123	108	231	3.7%
7-8 PM			89	84	68	68	104	72			87	75	162	2.6%
8-9 PM			85	54	70	68	57	60			71	61	131	2.1%
9-10 PM			46	31	48	30	44	26			46	29	75	1.2%
10-11 PM			22	29	13	19	20	24			18	24	42	0.7%
11-12 AM			13	11	11	9	17	15			14	12	25	0.4%
LANES			3275	3251	3019	3012	3146	3204			3147	3156	6302	100.0%
TOTAL			6526		6031		6350				6310			
	MON		TUE		WED		THURS		FRI		WK AVG			

PEAK HOUR					TOTAL VEHICALS-PEAK PERIODS		2 HOUR PEAK INTERVALS				
MAX. 7 - 9 am PEAK HOUR	583	⇒	9.3%	between 8-9 AM	2873	⇒	6 HR TOTAL	2 HR AM (7 - 9 AM)			
MAX. 7 - 11 am PEAK HOUR	583	⇒	9.3%	between 8-9 AM	1881	⇒	4 HR TOTAL	VEH / HR	VEH / 2HR	2 HR %	
MAX. 11 am - 1 pm PEAK HOUR	507	⇒	8.0%	between 11-12 PM				7-8 AM	383	966	15.3%
MAX. 11 am - 3 pm PEAK HOUR	558	⇒	8.8%	between 2-3 PM				8-9 AM	583		
MAX. 4 - 6 pm PEAK HOUR	561	⇒	8.9%	between 4-5 PM				2 HR NOON (11 - 1 PM)			
MAX. 3 - 6 pm PEAK HOUR	663	⇒	10.5%	between 3-4 PM				VEH / HR	VEH / 2HR	2 HR %	
								11-12 PM	507	992	15.7%
								12-1 PM	485		
								2 HR PM (4 - 6 PM)			
								VEH / HR	VEH / 2HR	2 HR %	
								4-5 PM	561	915	14.5%
								5-6 PM	354		

Borden St between McKenzie Ave and Cedar Hill X Rd

Northbound

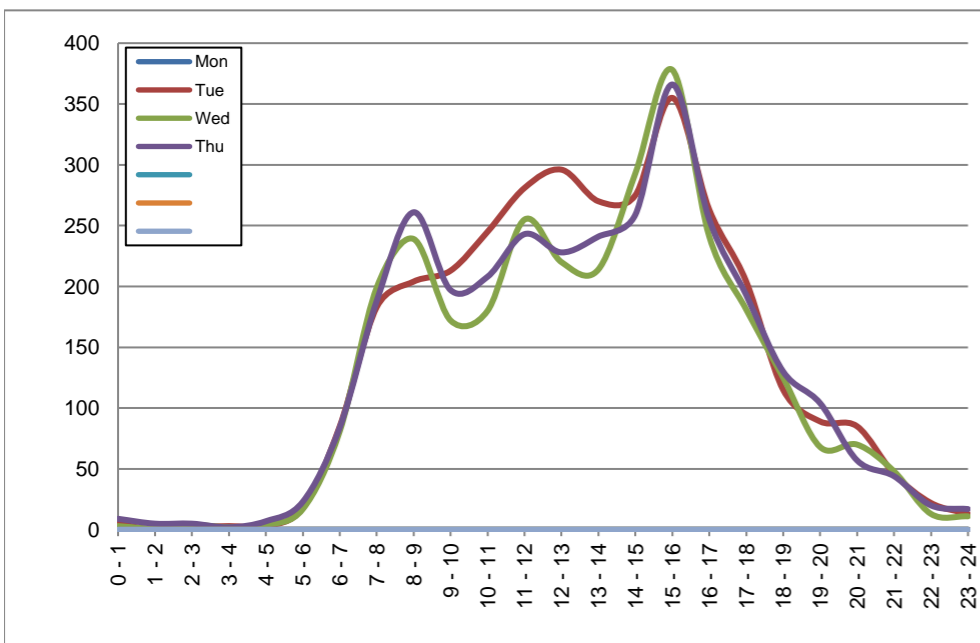
November 23, 2020 to November 26, 2020

Hourly Volumes

Time Period	Mon	Tue	Wed	Thu			
	Nov 23	Nov 24	Nov 25	Nov 26			
0 - 1		5	3	9			
1 - 2		0	1	5			
2 - 3		2	4	5			
3 - 4		3	2	2			
4 - 5		3	4	7			
5 - 6		18	17	23			
6 - 7		85	81	84			
7 - 8		183	199	188			
8 - 9		204	239	261			
9 - 10		213	172	197			
10 - 11		245	180	208			
11 - 12		281	255	243			
12 - 13		296	220	228			
13 - 14		270	214	241			
14 - 15		275	293	259			
15 - 16		355	378	366			
16 - 17		263	241	255			
17 - 18		204	181	193			
18 - 19		115	125	130			
19 - 20		89	68	104			
20 - 21		85	70	57			
21 - 22		46	48	44			
22 - 23		22	13	20			
23 - 24		13	11	17			
Day Total		3275	3019	3146			

15-Minute Volumes

Time Start	Mon	Tue	Wed	Thu			
	Nov 23	Nov 24	Nov 25	Nov 26			
0:00		1	1	3			
0:15		1	1	3			
0:30		2	0	2			
0:45		1	1	1			
1:00		0	1	3			
1:15		0	0	1			
1:30		0	0	1			
1:45		0	0	0			
2:00		1	2	2			
2:15		0	0	2			
2:30		0	1	0			
2:45		1	1	1			
3:00		0	0	0			
3:15		0	2	0			
3:30		1	0	0			
3:45		2	0	2			
4:00		1	1	1			
4:15		0	0	1			
4:30		1	0	1			
4:45		1	3	4			
5:00		0	1	0			
5:15		3	1	5			
5:30		4	1	2			
5:45		11	14	16			
6:00		18	13	18			
6:15		15	14	13			
6:30		15	22	19			
6:45		37	32	34			
7:00		27	28	27			
7:15		44	47	48			
7:30		50	47	45			
7:45		62	77	68			
8:00		41	62	66			
8:15		51	72	76			
8:30		54	50	62			
8:45		58	55	57			
9:00		57	50	56			
9:15		63	49	53			
9:30		42	31	35			
9:45		51	42	53			
10:00		60	53	49			
10:15		54	45	52			
10:30		72	45	47			
10:45		59	37	60			
11:00		64	57	76			
11:15		78	62	57			
11:30		65	73	42			
11:45		74	63	68			
12:00			75	63	54		
12:15			72	54	61		
12:30			75	45	65		
12:45			74	58	48		
13:00			66	39	58		
13:15			66	57	72		
13:30			67	53	43		
13:45			71	65	68		
14:00			73	77	69		
14:15			66	68	54		
14:30			72	67	56		
14:45			64	81	80		
15:00			79	89	88		
15:15			95	114	86		
15:30			98	97	95		
15:45			83	78	97		
16:00			82	61	65		
16:15			62	69	60		
16:30			63	56	65		
16:45			56	55	65		
17:00			51	55	50		
17:15			47	51	55		
17:30			59	42	46		
17:45			47	33	42		
18:00			32	46	43		
18:15			31	33	32		
18:30			27	28	34		
18:45			25	18	21		
19:00			25	26	34		
19:15			28	10	24		
19:30			18	19	28		
19:45			18	13	18		
20:00			28	18	13		
20:15			11	23	17		
20:30			30	16	13		
20:45			16	13	14		
21:00			11	11	16		
21:15			9	15	11		
21:30			14	12	7		
21:45			12	10	10		
22:00			9	5	5		
22:15			5	4	5		
22:30			5	1	6		
22:45			3	3	4		
23:00			5	5	6		
23:15			4	4	6		
23:30			2	2	3		
23:45			2	0	2		



Site notes:

Borden St between McKenzie Ave and Cedar Hill X Rd

Southbound

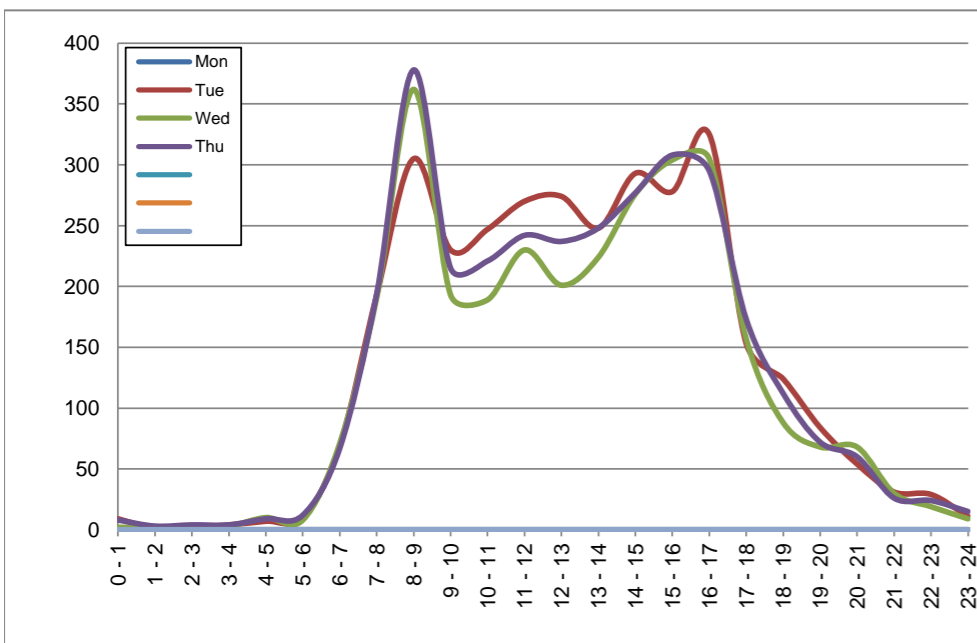
November 23, 2020 to November 26, 2020

Hourly Volumes

Time Period	Mon	Tue	Wed	Thu			
	Nov 23	Nov 24	Nov 25	Nov 26			
0 - 1		9	2	8			
1 - 2		1	2	3			
2 - 3		2	2	4			
3 - 4		4	3	4			
4 - 5		7	10	9			
5 - 6		10	8	12			
6 - 7		69	71	67			
7 - 8		193	191	194			
8 - 9		305	362	378			
9 - 10		230	193	215			
10 - 11		247	189	221			
11 - 12		270	230	242			
12 - 13		274	201	237			
13 - 14		248	224	248			
14 - 15		293	276	277			
15 - 16		278	304	308			
16 - 17		325	305	295			
17 - 18		153	157	173			
18 - 19		124	88	112			
19 - 20		84	68	72			
20 - 21		54	68	60			
21 - 22		31	30	26			
22 - 23		29	19	24			
23 - 24		11	9	15			
Day Total		3251	3012	3204			

15-Minute Volumes

Time Start	Mon	Tue	Wed	Thu			
	Nov 23	Nov 24	Nov 25	Nov 26			
0:00		3	0	3			
0:15		3	1	1			
0:30		1	0	2			
0:45		2	1	2			
1:00		0	0	1			
1:15		0	2	1			
1:30		1	0	0			
1:45		0	0	1			
2:00		1	1	1			
2:15		0	0	1			
2:30		0	0	0			
2:45		1	1	2			
3:00		0	1	0			
3:15		0	0	1			
3:30		1	2	0			
3:45		3	0	3			
4:00		0	3	1			
4:15		0	0	1			
4:30		5	2	1			
4:45		2	5	6			
5:00		3	0	2			
5:15		0	1	2			
5:30		3	5	5			
5:45		4	2	3			
6:00		13	6	3			
6:15		15	14	19			
6:30		17	20	21			
6:45		24	31	24			
7:00		38	41	32			
7:15		51	47	48			
7:30		40	48	44			
7:45		64	55	70			
8:00		70	92	83			
8:15		80	104	95			
8:30		65	90	113			
8:45		90	76	87			
9:00		54	42	57			
9:15		46	49	48			
9:30		65	47	61			
9:45		65	55	49			
10:00		73	35	60			
10:15		56	55	52			
10:30		55	58	47			
10:45		63	41	62			
11:00		52	58	53			
11:15		72	57	73			
11:30		69	65	60			
11:45		77	50	56			
12:00			79	49	62		
12:15			69	52	55		
12:30			55	47	57		
12:45			71	53	63		
13:00			78	61	57		
13:15			47	51	64		
13:30			69	57	65		
13:45			54	55	62		
14:00			55	60	57		
14:15			85	77	64		
14:30			80	76	78		
14:45			73	63	78		
15:00			67	63	69		
15:15			63	68	63		
15:30			70	94	90		
15:45			78	79	86		
16:00			96	90	82		
16:15			74	63	67		
16:30			95	97	94		
16:45			60	55	52		
17:00			40	53	62		
17:15			44	30	47		
17:30			34	38	29		
17:45			35	36	35		
18:00			22	30	34		
18:15			35	16	23		
18:30			28	22	30		
18:45			39	20	25		
19:00			22	18	23		
19:15			26	22	17		
19:30			18	14	13		
19:45			18	14	19		
20:00			15	22	13		
20:15			11	11	16		
20:30			13	14	17		
20:45			15	21	14		
21:00			7	9	5		
21:15			13	8	10		
21:30			7	10	7		
21:45			4	3	4		
22:00			11	7	8		
22:15			9	2	2		
22:30			5	1	6		
22:45			4	9	8		
23:00			6	2	5		
23:15			3	1	5		
23:30			0	3	4		
23:45			2	3	1		



Site notes:

Vehicle Speed Summary

Saanich Engineering Department

Count Id: C0006-02

Filename: Borden St between McKenzie Ave and Cedar Hill X Rd-Nov-2020.xlsm

Location: Borden St between McKenzie Ave and Cedar Hill X Rd

Note:

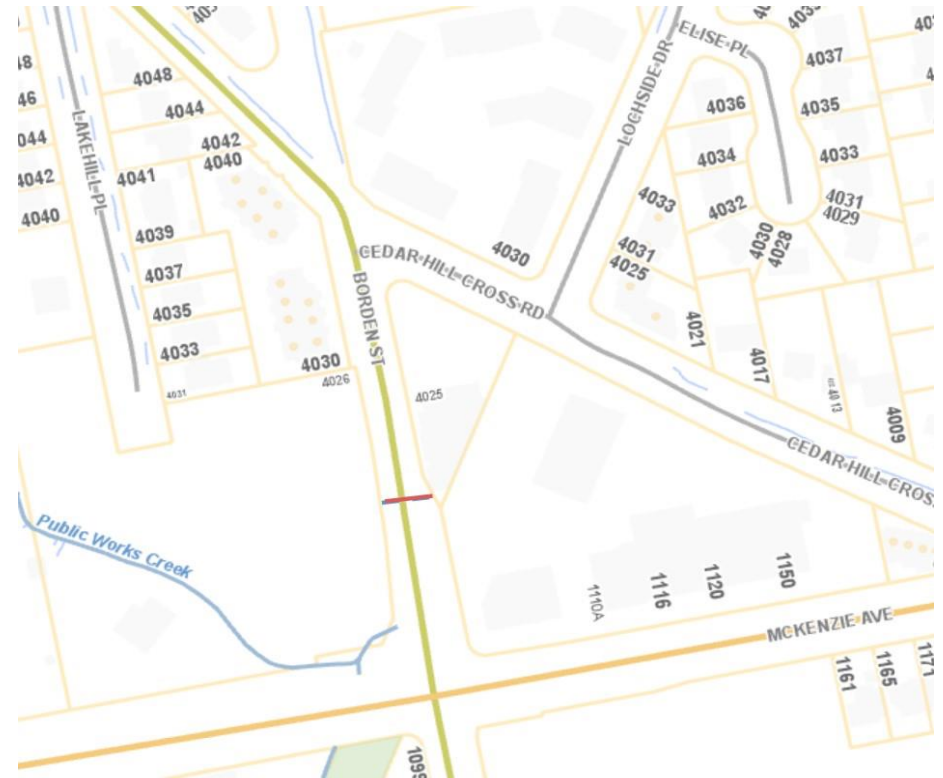
Direction: **North-South**

Dates: **November 24, 2020 To November 27, 2020**

Filtered data

AVG. SPEED	18 mph	30 km/h
50 % SPEED	18 mph	29 km/h
85 % SPEED	23 mph	37 km/h
95 % SPEED	26 mph	42 km/h

Location Map



Borden St between McKenzie Ave and Cedar Hill X Rd

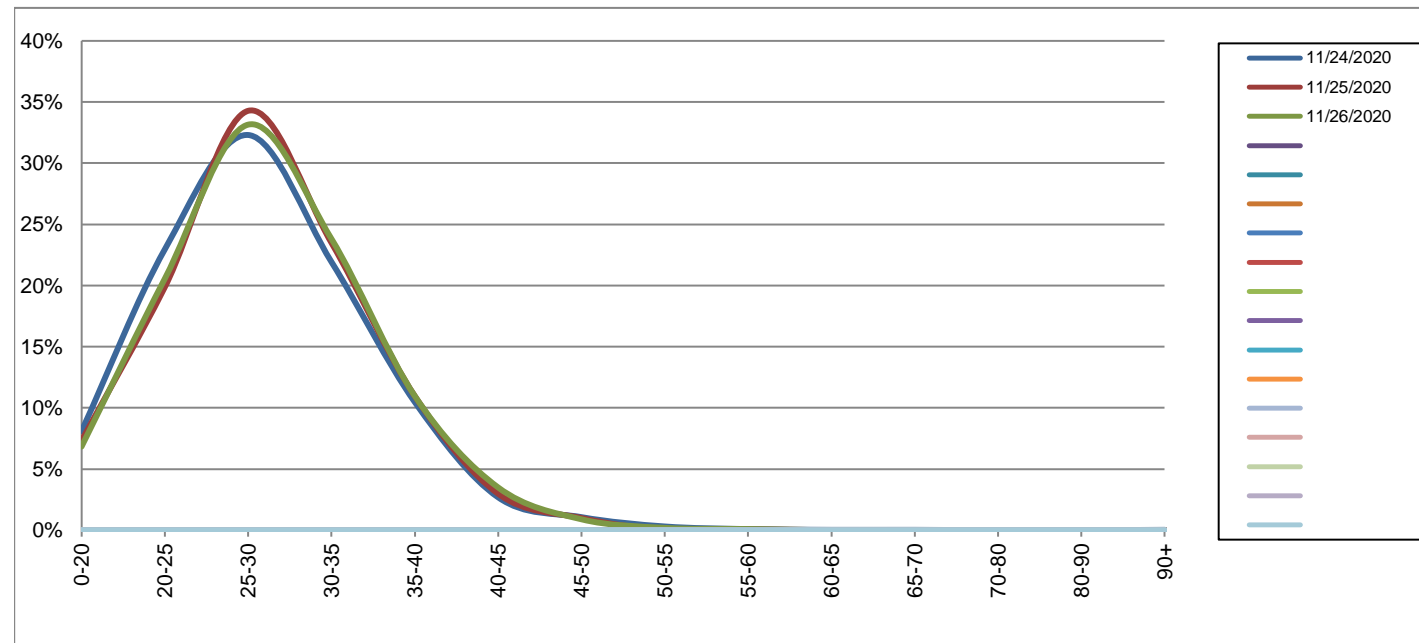
Northbound

November 24, 2020 to November 26, 2020

Daily Speed Bin Percentages															Daily Speed Bin Volumes														Total	Avg.
Bin #	1	2	3	4	5	6	7	8	9	10	11	12	13	14	1	2	3	4	5	6	7	8	9	10	11	12	13	14	Volume	Speed
Bin Speeds	0-20	20-25	25-30	30-35	35-40	40-45	45-50	50-55	55-60	60-65	65-70	70-80	80-90	90+	0-20	20-25	25-30	30-35	35-40	40-45	45-50	50-55	55-60	60-65	65-70	70-80	80-90	90+		
11/24/2020	8.1%	23.0%	32.3%	21.9%	10.5%	2.7%	1.1%	0.3%	0.1%	0.0%	0.0%	0.0%	0.0%	0.0%	265	752	1058	718	343	88	35	10	3	1	1	0	0	1	3275	28
11/25/2020	7.3%	19.9%	34.3%	23.5%	11.0%	3.0%	1.0%	0.0%	0.1%	0.0%	0.0%	0.0%	0.0%	0.0%	221	600	1035	709	331	90	30	1	2	0	0	0	0	0	3019	28
11/26/2020	6.8%	20.6%	33.2%	23.8%	11.0%	3.5%	0.9%	0.2%	0.1%	0.0%	0.0%	0.0%	0.0%	0.0%	215	647	1043	749	345	110	28	6	3	0	0	0	0	0	3146	28
Total	7.4%	21.2%	33.2%	23.1%	10.8%	3.1%	1.0%	0.2%	0.1%	0.0%	0.0%	0.0%	0.0%	0.0%	701	1999	3136	2176	1019	288	93	17	8	1	1	0	0	1	9440	28

Speed Data Summary

Bin #	1	2	3	4	5	6	7	8	9	10	11	12	13	14	Total
Bin Speeds	0-20	20-25	25-30	30-35	35-40	40-45	45-50	50-55	55-60	60-65	65-70	70-80	80-90	90+	
Survey Total	701	1999	3136	2176	1019	288	93	17	8	1	1	0	0	1	9440
% Total	7.4%	21.2%	33.2%	23.1%	10.8%	3.1%	1.0%	0.2%	0.1%	0.0%	0.0%	0.0%	0.0%	0.0%	100%
Accumulated %	7.4%	28.6%	61.8%	84.9%	95.7%	98.7%	99.7%	99.9%	100.0%	100.0%	100.0%	100.0%	100.0%	100.0%	
Inverse Accum. %	92.6%	71.4%	38.2%	15.1%	4.3%	1.3%	0.3%	0.1%	0.0%	0.0%	0.0%	0.0%	0.0%	0.0%	
Average Speed	28 KM/H														



Site notes:

Borden St between McKenzie Ave and Cedar Hill X Rd

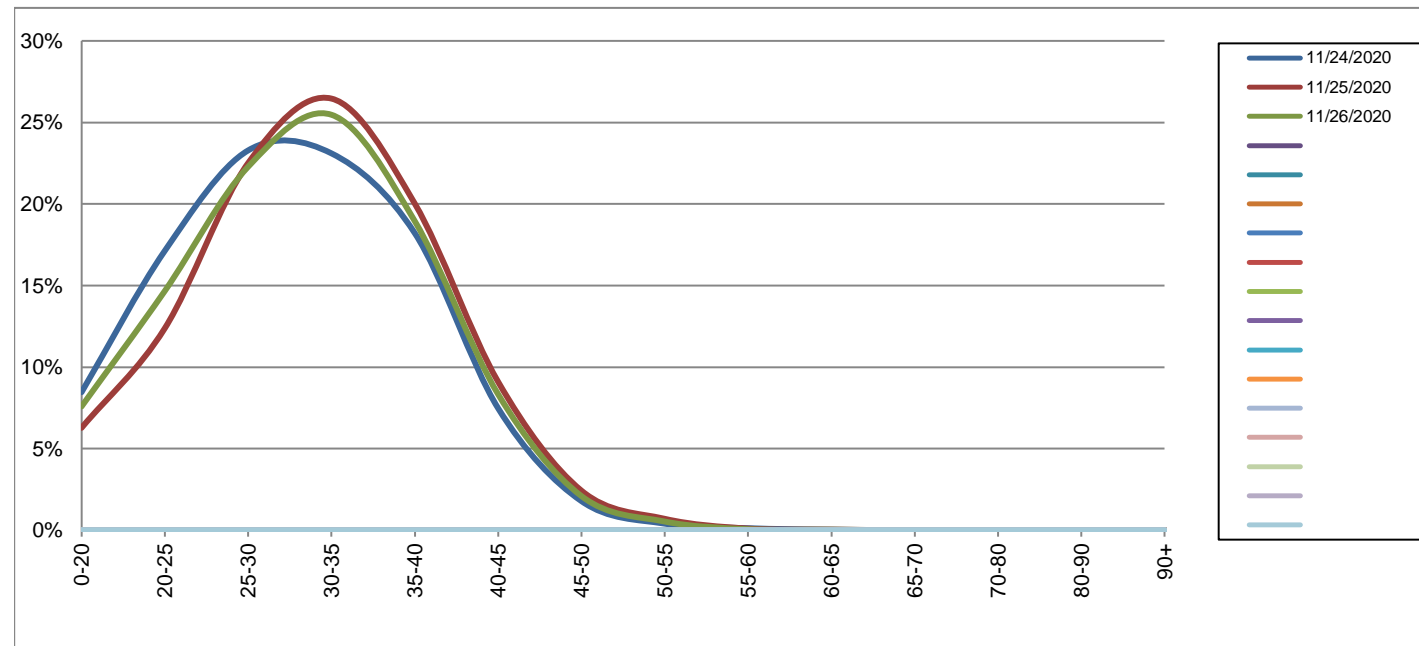
Southbound

November 24, 2020 to November 26, 2020

Daily Speed Bin Percentages															Daily Speed Bin Volumes														Total	Avg.
Bin #	1	2	3	4	5	6	7	8	9	10	11	12	13	14	1	2	3	4	5	6	7	8	9	10	11	12	13	14		
Bin Speeds	0-20	20-25	25-30	30-35	35-40	40-45	45-50	50-55	55-60	60-65	65-70	70-80	80-90	90+	0-20	20-25	25-30	30-35	35-40	40-45	45-50	50-55	55-60	60-65	65-70	70-80	80-90	90+	Volume	Speed
11/24/2020	8.5%	17.1%	23.3%	23.1%	18.2%	7.5%	1.8%	0.4%	0.1%	0.0%	0.0%	0.0%	0.0%	0.0%	275	557	757	751	592	243	58	13	4	1	0	0	0	0	3251	30
11/25/2020	6.3%	12.4%	22.5%	26.5%	20.0%	9.1%	2.4%	0.7%	0.1%	0.0%	0.0%	0.0%	0.0%	0.0%	189	373	678	797	603	274	73	21	3	1	0	0	0	0	3012	31
11/26/2020	7.6%	14.7%	22.3%	25.5%	18.9%	8.3%	2.1%	0.5%	0.1%	0.0%	0.0%	0.0%	0.0%	0.0%	243	470	714	816	607	267	67	17	2	1	0	0	0	0	3204	30
Total	7.5%	14.8%	22.7%	25.0%	19.0%	8.3%	2.1%	0.5%	0.1%	0.0%	0.0%	0.0%	0.0%	0.0%	707	1400	2149	2364	1802	784	198	51	9	3	0	0	0	0	9467	30

Speed Data Summary

Bin #	1	2	3	4	5	6	7	8	9	10	11	12	13	14	Total
Bin Speeds	0-20	20-25	25-30	30-35	35-40	40-45	45-50	50-55	55-60	60-65	65-70	70-80	80-90	90+	
Survey Total	707	1400	2149	2364	1802	784	198	51	9	3	0	0	0	0	9467
% Total	7.5%	14.8%	22.7%	25.0%	19.0%	8.3%	2.1%	0.5%	0.1%	0.0%	0.0%	0.0%	0.0%	0.0%	100%
Accumulated %	7.5%	22.3%	45.0%	69.9%	89.0%	97.2%	99.3%	99.9%	100.0%	100.0%	100.0%	100.0%	100.0%	100.0%	
Inverse Accum. %	92.5%	77.7%	55.0%	30.1%	11.0%	2.8%	0.7%	0.1%	0.0%	0.0%	0.0%	0.0%	0.0%	0.0%	
Average Speed	30 KM/H														



Site notes:

Borden St between McKenzie Ave and Cedar Hill X Rd

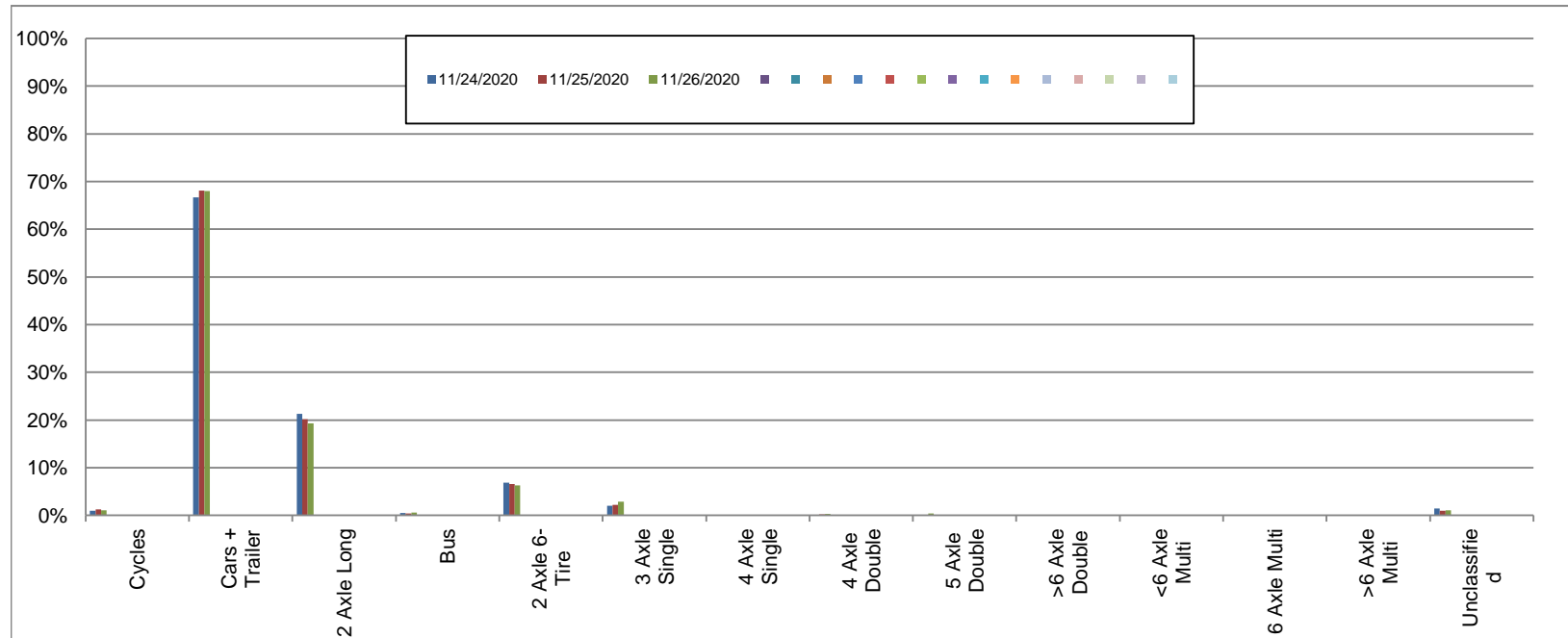
Northbound

November 24, 2020 to November 26, 2020

Daily Class Bin Percentages															Daily Class Bin Volumes														
Bin #	1	2	3	4	5	6	7	8	9	10	11	12	13	14	1	2	3	4	5	6	7	8	9	10	11	12	13	14	Total Volume
Bin Class	Cycles	Cars + Trailer	2 Axle Long	Bus	2 Axle 6-Tire	3 Axle Single	4 Axle Single	4 Axle Double	5 Axle Double	>6 Axle Double	<6 Axle Multi	6 Axle Multi	>6 Axle Multi	Unclassified	Cycles	Cars + Trailer	2 Axle Long	Bus	2 Axle 6-Tire	3 Axle Single	4 Axle Single	4 Axle Double	5 Axle Double	>6 Axle Double	<6 Axle Multi	6 Axle Multi	>6 Axle Multi	Unclassified	
11/24/2020	1.0%	66.7%	21.3%	0.5%	6.9%	2.0%	0.1%	0.1%	0.0%	0.1%	0.0%	0.0%	0.0%	1.4%	32	2183	698	15	225	67	2	4	1	2	0	0	0	46	3275
11/25/2020	1.3%	68.1%	20.1%	0.4%	6.6%	2.2%	0.1%	0.2%	0.1%	0.0%	0.0%	0.0%	0.0%	1.0%	38	2055	607	13	199	65	2	7	3	1	0	0	0	29	3019
11/26/2020	1.1%	68.1%	19.3%	0.5%	6.3%	2.9%	0.1%	0.3%	0.3%	0.1%	0.0%	0.0%	0.0%	1.0%	34	2141	607	17	199	90	2	9	11	2	0	1	0	33	3146
Total	1.1%	67.6%	20.3%	0.5%	6.6%	2.4%	0.1%	0.2%	0.2%	0.1%	0.0%	0.0%	0.0%	1.1%	104	6379	1912	45	623	222	6	20	15	5	0	1	0	108	9440

Class Data Summary

Bin #	1	2	3	4	5	6	7	8	9	10	11	12	13	14	Total Volume
Bin Class	Cycles	Cars + Trailer	2 Axle Long	Bus	2 Axle 6-Tire	3 Axle Single	4 Axle Single	4 Axle Double	5 Axle Double	>6 Axle Double	<6 Axle Multi	6 Axle Multi	>6 Axle Multi	Unclassified	Total Volume
Survey Total	104	6379	1912	45	623	222	6	20	15	5	0	1	0	108	9440
% Total	1.1%	67.6%	20.3%	0.5%	6.6%	2.4%	0.1%	0.2%	0.2%	0.1%	0.0%	0.0%	0.0%	1.1%	100%
Accumulated %	1.1%	68.7%	88.9%	89.4%	96.0%	98.4%	98.4%	98.6%	98.8%	98.8%	98.8%	98.9%	98.9%	100.0%	
Inv. Accum. %	98.9%	31.3%	11.1%	10.6%	4.0%	1.6%	1.6%	1.4%	1.2%	1.2%	1.2%	1.1%	1.1%	0.0%	



Classification Descriptions

Bin #	Bin Description
1	Motorcycles
2	Passenger cars, including those with recreational trailers
3	2-axle pick-ups, vans, and RVs, including those with recreational trailers
4	Buses
5	2-axle, 6-tire single units
6	3-axle single units
7	4-axle single units
8	3-axle or 4-axle double unit
9	5-axle double unit
10	6-, 7-, or 8-axle double unit
11	5-axle multiple unit
12	6-axle multiple unit
13	7-or-more-axle multiple unit
14	Vehicles that could not be classified

Site notes:

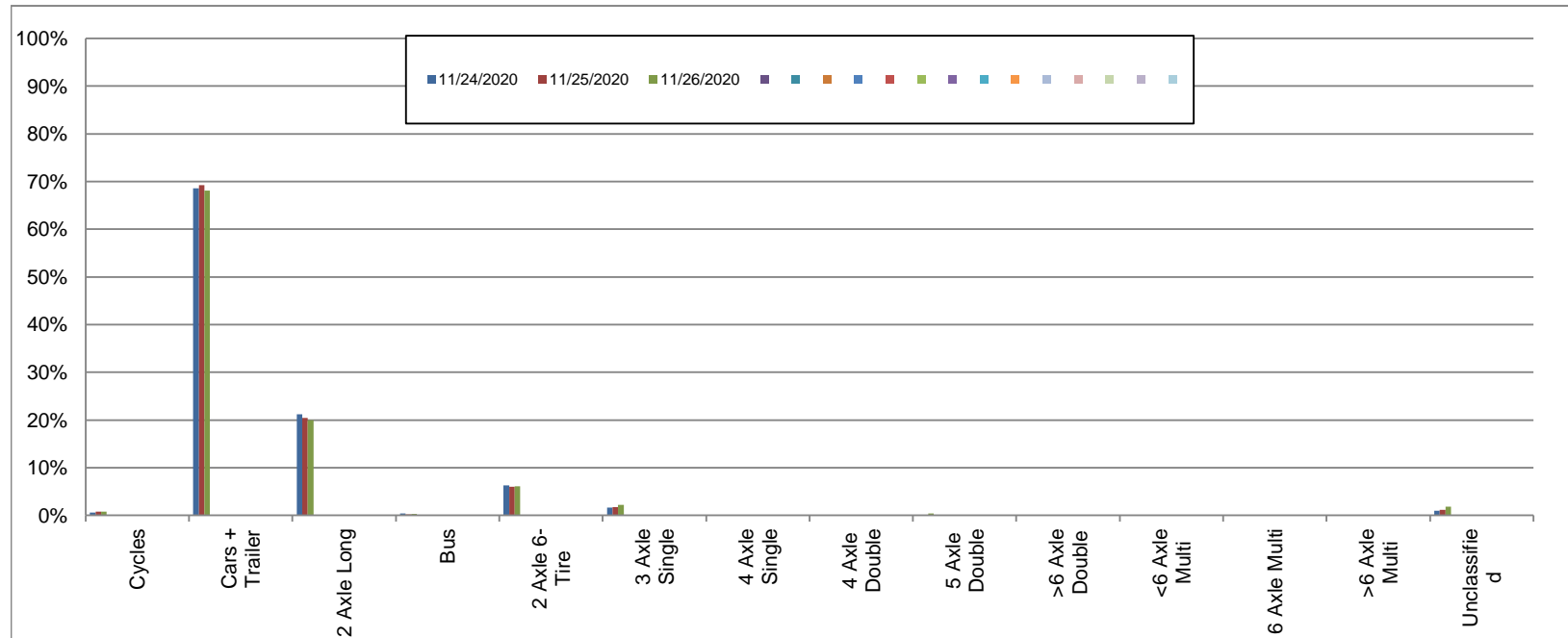
Borden St between McKenzie Ave and Cedar Hill X Rd

Southbound
November 24, 2020 to November 26, 2020

Daily Class Bin Percentages															Daily Class Bin Volumes														
Bin #	1	2	3	4	5	6	7	8	9	10	11	12	13	14	1	2	3	4	5	6	7	8	9	10	11	12	13	14	Total Volume
Bin Class	Cycles	Cars + Trailer	2 Axle Long	Bus	2 Axle 6-Tire	3 Axle Single	4 Axle Single	4 Axle Double	5 Axle Double	>6 Axle Double	<6 Axle Multi	6 Axle Multi	>6 Axle Multi	Unclassified	Cycles	Cars + Trailer	2 Axle Long	Bus	2 Axle 6-Tire	3 Axle Single	4 Axle Single	4 Axle Double	5 Axle Double	>6 Axle Double	<6 Axle Multi	6 Axle Multi	>6 Axle Multi	Unclassified	
11/24/2020	0.6%	68.5%	21.2%	0.4%	6.3%	1.6%	0.1%	0.2%	0.1%	0.1%	0.0%	0.0%	0.0%	0.9%	20	2228	689	13	204	52	2	5	4	4	0	0	0	30	3251
11/25/2020	0.8%	69.3%	20.4%	0.2%	6.0%	1.8%	0.1%	0.1%	0.1%	0.1%	0.0%	0.0%	0.0%	1.2%	23	2087	615	6	182	53	2	3	2	3	0	0	0	36	3012
11/26/2020	0.7%	68.1%	19.9%	0.3%	6.1%	2.2%	0.1%	0.1%	0.4%	0.1%	0.0%	0.0%	0.0%	1.8%	24	2182	639	11	196	69	4	4	12	4	0	0	0	59	3204
Total	0.7%	68.6%	20.5%	0.3%	6.1%	1.8%	0.1%	0.1%	0.2%	0.1%	0.0%	0.0%	0.0%	1.3%	67	6497	1943	30	582	174	8	12	18	11	0	0	0	125	9467

Class Data Summary

Bin #	1	2	3	4	5	6	7	8	9	10	11	12	13	14	Total Volume
Bin Class	Cycles	Cars + Trailer	2 Axle Long	Bus	2 Axle 6-Tire	3 Axle Single	4 Axle Single	4 Axle Double	5 Axle Double	>6 Axle Double	<6 Axle Multi	6 Axle Multi	>6 Axle Multi	Unclassified	Total Volume
Survey Total	67	6497	1943	30	582	174	8	12	18	11	0	0	0	125	9467
% Total	0.7%	68.6%	20.5%	0.3%	6.1%	1.8%	0.1%	0.1%	0.2%	0.1%	0.0%	0.0%	0.0%	1.3%	100%
Accumulated %	0.7%	69.3%	89.9%	90.2%	96.3%	98.2%	98.2%	98.4%	98.6%	98.7%	98.7%	98.7%	98.7%	100.0%	
Inv. Accum. %	99.3%	30.7%	10.1%	9.8%	3.7%	1.8%	1.8%	1.6%	1.4%	1.3%	1.3%	1.3%	0.0%		



Classification Descriptions

Bin #	Bin Description
1	Motorcycles
2	Passenger cars, including those with recreational trailers
3	2-axle pick-ups, vans, and RVs, including those with recreational trailers
4	Buses
5	2-axle, 6-tire single units
6	3-axle single units
7	4-axle single units
8	3-axle or 4-axle double unit
9	5-axle double unit
10	6-, 7-, or 8-axle double unit
11	5-axle multiple unit
12	6-axle multiple unit
13	7-or-more-axle multiple unit
14	Vehicles that could not be classified

Site notes: